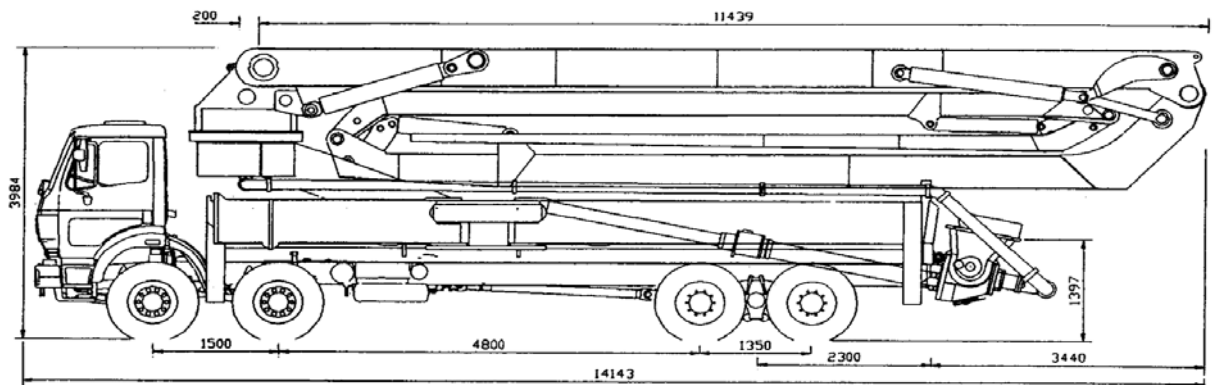


Concrete Distributor Boom

VMR 4-44/40-2V

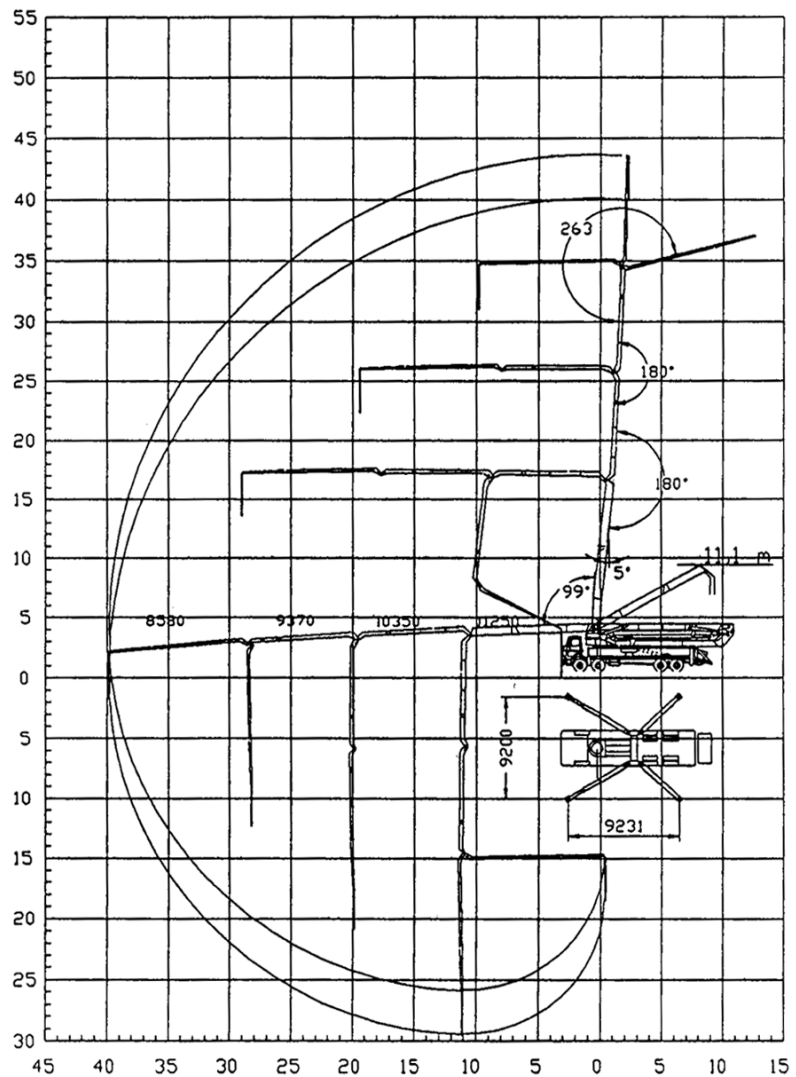


Technical Data

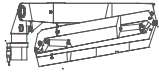
Vertical reach	m	43,5
Horizontal reach	m	39,8
Max. depth	m	28,4
Unfolding height	m	11,2
Slewing range	°	370
Slewing rate	1/min	0,4
Max. outrigger pressure	kN	230
Max. oil pressure	bar	340
Max. diam. of conveying line	mm	125
Max. length of end hose	m	3,0

Arm length Operation range

Arm 1	mm	11250
	°	99
Arm 2	mm	10350
	°	180
Arm 3	mm	9370
	°	180
Arm 4	mm	8580
	°	263

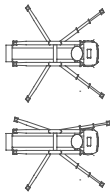


Technical Description – VMR 4-44/40-2V



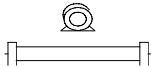
Boom Construction

The distributor boom is four-armed and designed as a roll-fold system. All boom sections are made of high-grade fine grain steel in box cross section design, consequently with low weight and high stability, ensuring maximum safety. All boom functions are hydraulically operated. A multi-purpose turntable and planetary gearbox ensure sensitive slewing of the boom.



2V-Outrigger System

Front outriggers in telescopic design, therefore minimum space is required during set-up. Two rear outriggers are hydraulically slewable. The outrigger system is based centrally at the main frame. The position of the outriggers at the boom base guarantees high stability and safety at all outrigger spreads and small space requirements.



Concrete Conveying Pipeline

The concrete distributor boom is equipped with conveying pipes (\varnothing 125 mm, 5") made of highly wear-resistant material, and an endhose. The reduction is performed over a distance of 3 m or 18 ft to prevent clogging. The pipeline sections on boom arms, joints and turret are connected with high-grade forged couplings.



Control and Safety

All arm functions are hydraulically operated and proportional. Two relief valves, mounted directly at the boom cylinders protect against overloading and hose or pipe breaks. Outrigger cylinders are protected via pilot controlled check valves. The control panel for the boom operation can be actuated either manually or by remote control. The radio remote control enables proportional operation.



Remote Control

The cable remote control is safely protected in an impact resistant housing and ensures a comfortable operation. A radio remote control for even more user-friendly operation can be supplied and installed any time.

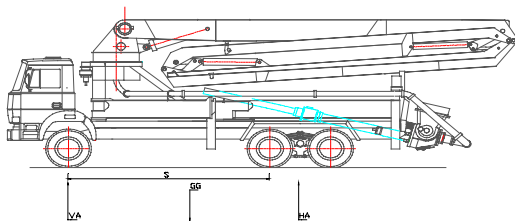


Standard Delivery Schedule

Concrete distributor boom, ready for operation, with conveying pipeline and end hose for mounting with REICH pump unit on a suitable chassis. Priming and one-colour Enamel finish.

Trucks

Dimensions



S/wheel base 5000 mm
GG/total weight 27,0 t
VA/front axle 7,0 t
HA/rear axle 20,0 t

All sizes are minimal requirements; national laws must be observed.